



Orchid Close, Romford, RM4

BUTLER  STAG



Smart and well-presented one bedroom apartment, located on the first floor of a modern purpose built block.



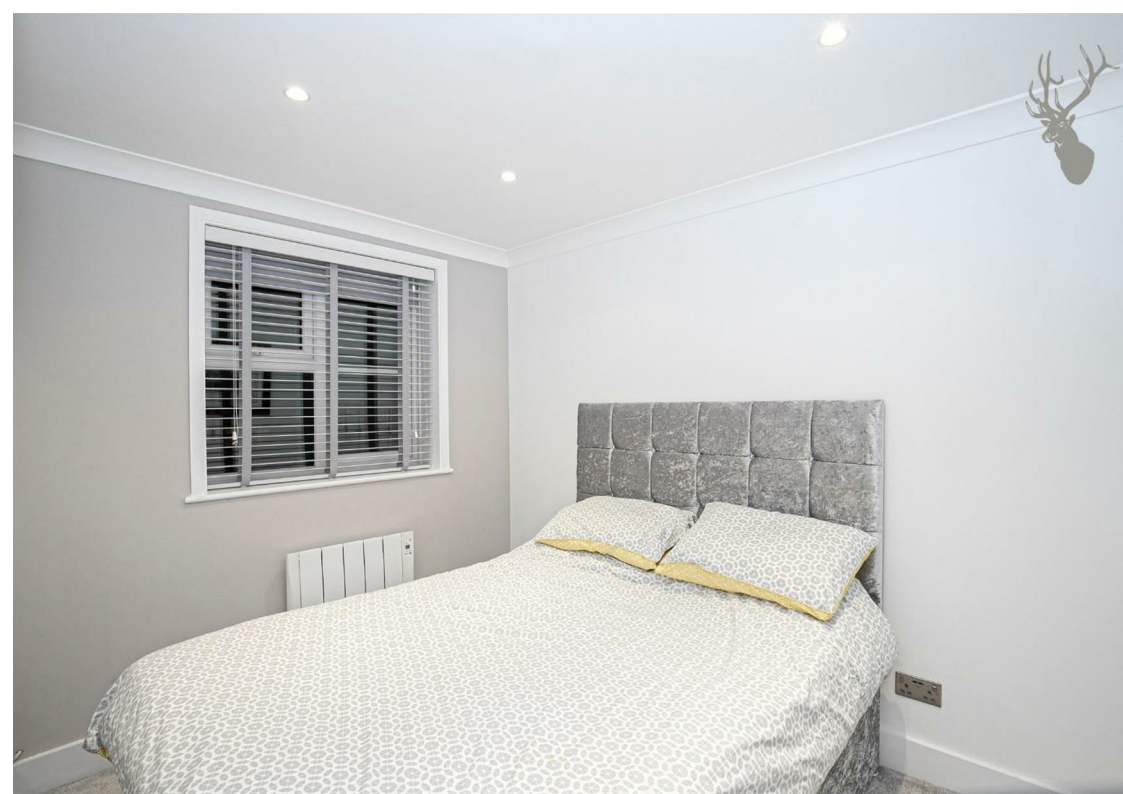
Leasehold

- Sold by Butler and Stag
- Modern Throughout
- Long Lease
- One Bedroom
- Well Presented
- Allocated Parking

Access via a secure entrance with the stairs leading to the first floor, the apartment boasts a good size living space, a separate modern kitchen, a double bedroom and a smart bathroom. This property also has allocated parking.

Abridge is a beautiful village that is conveniently located for the nearby towns of Theydon Bois (with central line station), Chigwell and Loughton with transport that links to the M25 and M11. The village offers several pubs and restaurants, a coffee bar, newsagents and a primary school.

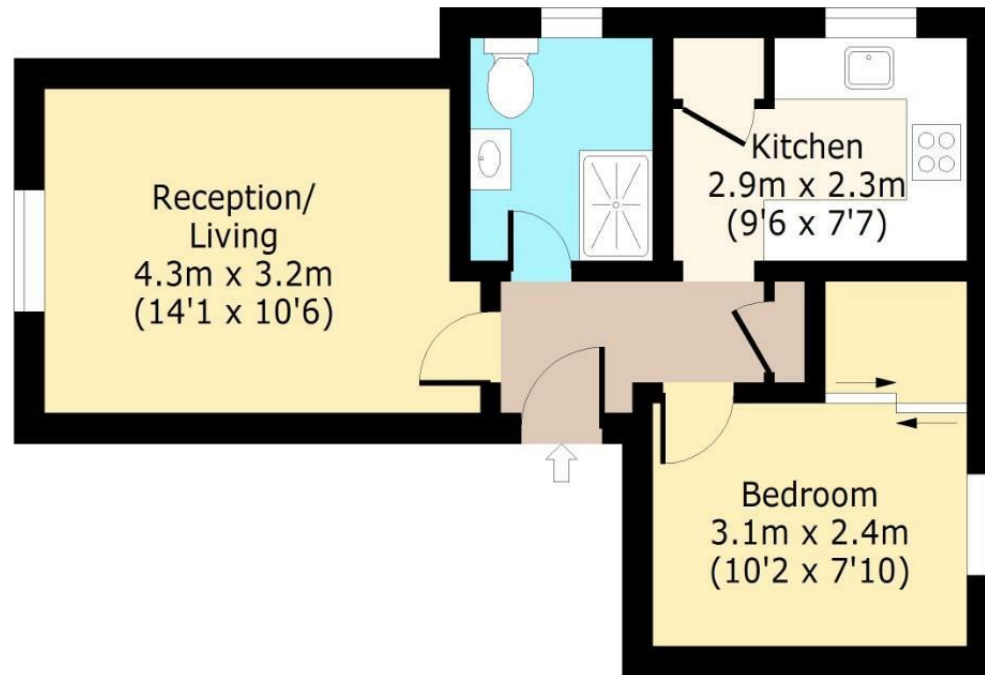




Orchid Close

First Floor

Approx. 39 Sq. meters (417 Sq. feet)



Total area: approx. 39 Sq. meters (417 Sq. feet)

For illustration purposes only - not to scale

www.lpaplus.com

IMPORTANT NOTICE - These particulars have been prepared in good faith and they are not intended to constitute part of an offer or contract. We have not performed a structural survey on this property and the services, appliances and specific fittings have not been tested. All photographs, measurements, floor plans and distances referred to are given as a guide and should not be relied upon.

BUTLER & STAG

☎ 01992 667666

🏠 4 Forest Drive, Theydon Bois, Essex, CM16 7EY

✉ theydon@butlerandstag.com

www.butlerandstag.uk